

AGENDA
COUNCIL COMMITTEE MEETING
MUNICIPAL DISTRICT OF PINCHER CREEK
March 28, 2023
2:00 pm
Council Chambers

- 1) Approval of Agenda
- 2) Delegations
 - a) 2:00 to 2:30 - Sunrise Solar Project
 - b) 2:30 to 3:00 - Tristan Walker, Municipal Energy Project Lead
- 3) Closed Session
 - a) 2023 Property Tax Discussion – Part 2 Overview - FOIP Sec 24.1.a
- 4) Round Table
- 5) Adjournment

CLIMATE VULNERABILITY STUDY

Town and MD of Pincher Creek

March, 2023



PURPOSE OF PROJECT

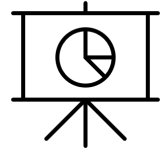
ANALYSE FUTURE CLIMATE RISKS

- Identify local risks
- Future climate projections
- Cost of disasters

DEVELOP ADAPTATION PLAN

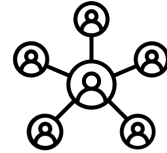
- Recommended adaptation measures
 - Cost of adaptation measures
- Recommended timelines

PURPOSE OF PRESENTATION



REVIEW RESULTS

Comments
and
concerns?

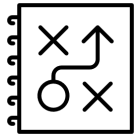


OPEN HOUSE

Request council
attendance and
participation

WHAT'S BEEN DONE?

ANALYSIS OF CURRENT STATE OF CLIMATE RESILIENCE



Plans

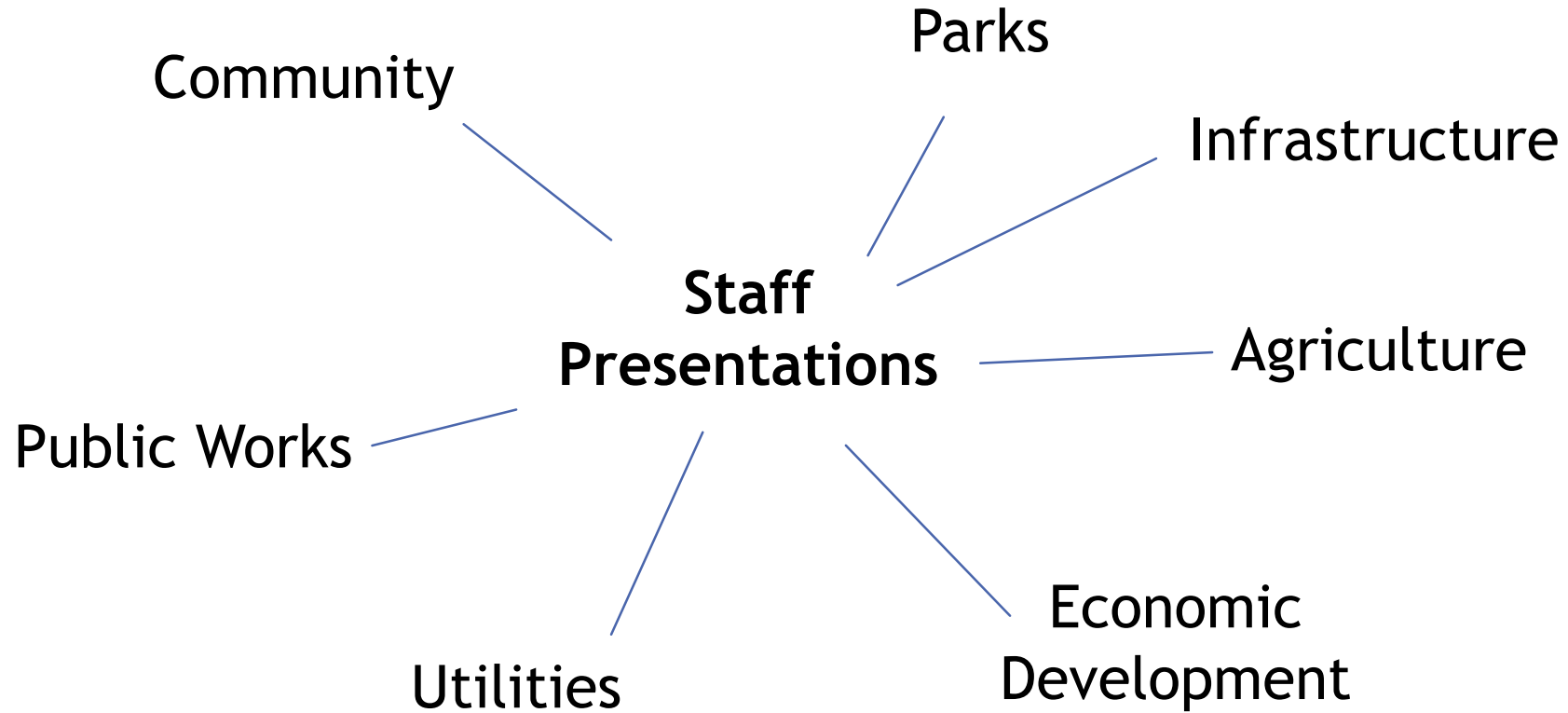


Infrastructure



Policies

WHAT'S BEEN DONE? STAFF SHOWCASE

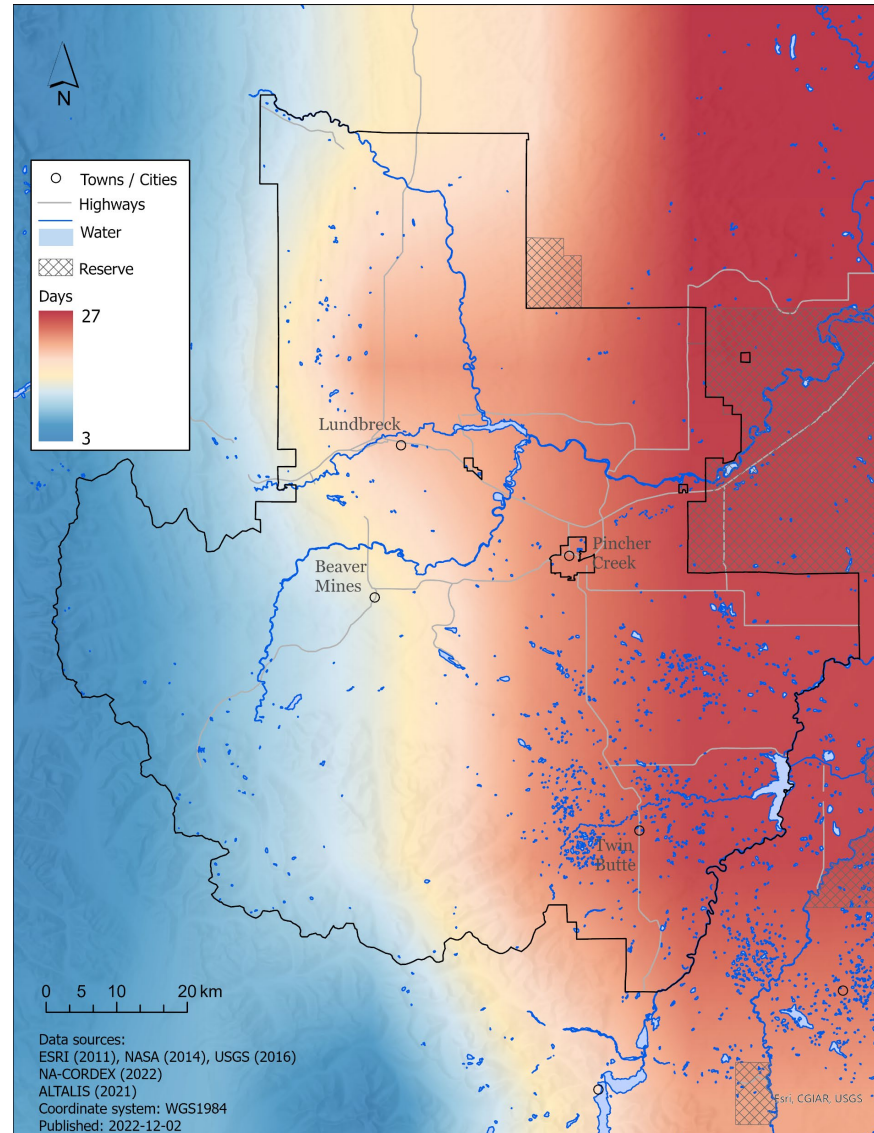


WHAT'S BEEN DONE?

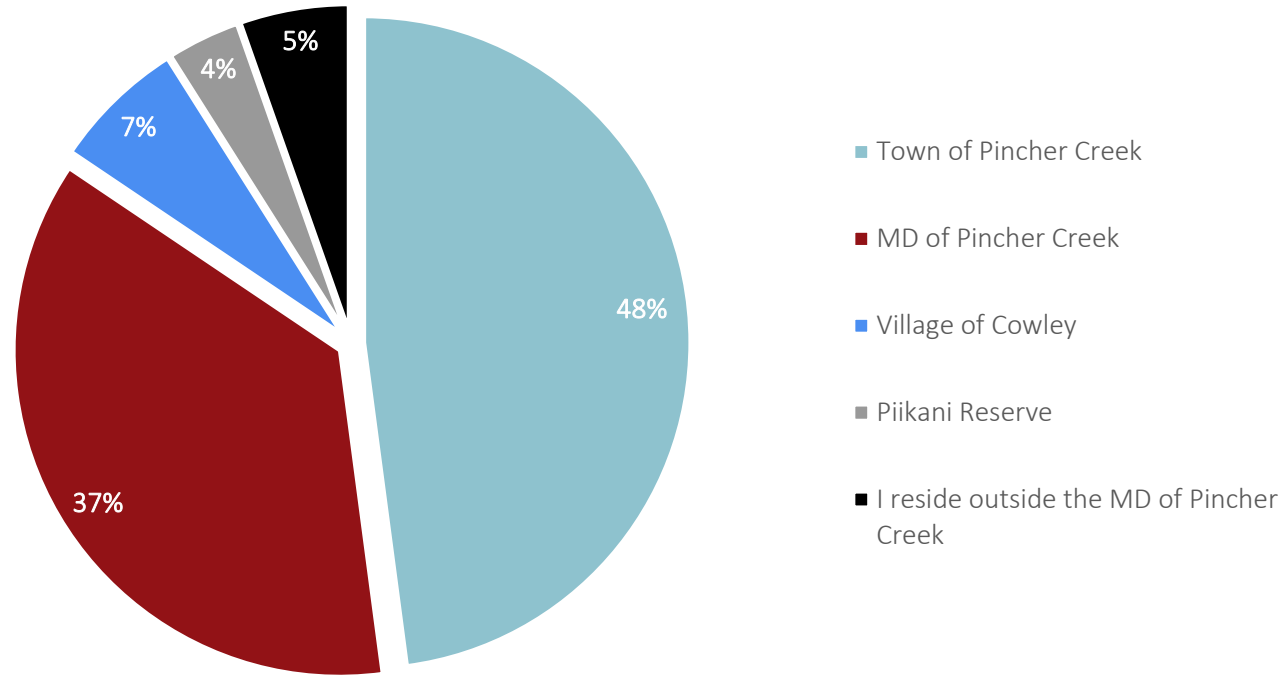
ANALYSIS OF CLIMATE PROJECTIONS

**At 3°C global
increase ~2060**

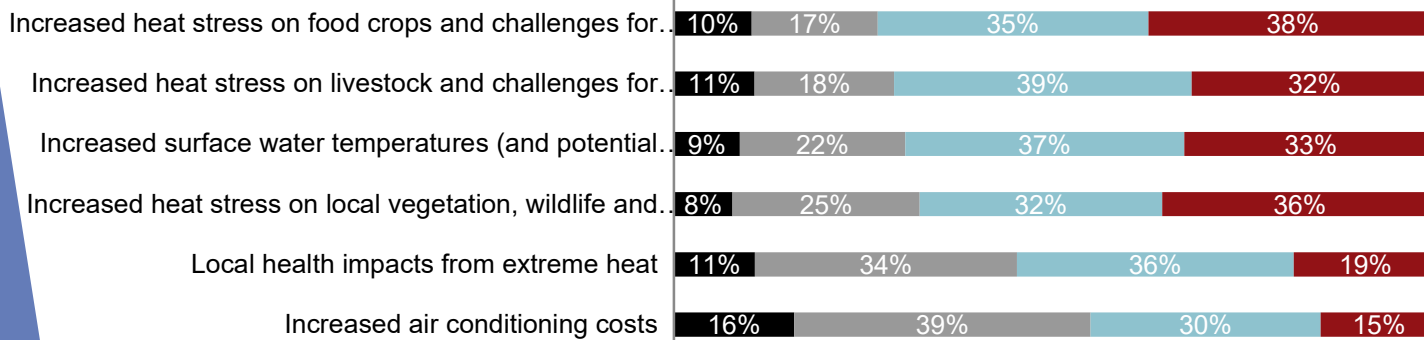
**INCREASE IN DAYS
>30°C**



WHAT'S BEEN DONE? COMMUNITY SURVEY



■ No effect ■ Minor effect ■ Moderate effect ■ Major effect



Community Survey



How will the Town and M.D. of Pincher Creek be impacted by climate changes?
How can we increase our community's resilience?

TO COMPLETE THE SURVEY, GO TO:
surveymonkey.com/r/Pincher

Please complete the survey by **December 23, 2022.**



Complete the survey for your chance to win 1 of 2 **\$100** gift certificates at a local business!

WHAT'S BEEN DONE?

CLIMATE RISK SCENARIO WORKSHOP

1) Extreme heat impacts to human health and livestock

Description	Multiple days of extreme heat causes negative impacts to human health				
Climate driver(s)	Hotter temperatures				
Threshold:	28 hot days in a year where temperatures reach +30°C				
Likelihood Scores					
	<table border="1"> <thead> <tr> <th>Historic</th> <th>Future</th> </tr> </thead> <tbody> <tr> <td style="text-align: center;">2 [unlikely]</td> <td style="text-align: center;">4 [likely]</td> </tr> </tbody> </table>	Historic	Future	2 [unlikely]	4 [likely]
Historic	Future				
2 [unlikely]	4 [likely]				
Potential consequences	<ul style="list-style-type: none"> Injuries/fatalities (vulnerable populations disproportionately affected including seniors, obese individuals, and those with chronic conditions) Minor discomfort Increased space cooling costs Reduced participation in outdoor activities Increased water demand for both irrigation and drinking Negative health impacts to livestock 				
Consequence score	3 (Moderate)				
Risk Score	High				
Notes					
Climate driver(s)	Climate projections show more hot days (+30°C), very hot days (+35°C) and warmer maximum temperatures				
Threshold	30°C is an approximate temperature at which health effects from extreme heat escalate cause increased morbidity and mortality for at-risk populations ¹				
Historic likelihood	Likelihood score determined based on the Pincher Creek climate projections report.				
Future likelihood	The number of hot days where temperatures reach +30°C are projected to increase from 5 days to 28 days in the Pincher Creek area ² .				

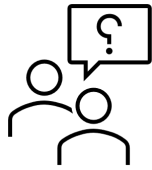


RESULTS

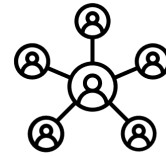
RISK MATRIX

CONSEQUENCE	Very high (5)					
	High (4)		River flood	Wildfire Drought Water shortage		
	Medium (3)		Overland flood	Dam flood Invasive weed outbreak Vector-borne disease Changing ecosystems	Extreme heat Loss of winter recreation	Smoke
	Low (2)			Hail	Invasive species outbreak Blizzard	Windstorm Freezing rain River flood (ongoing)
	Very low (1)					
			Rare (<1% AP) (1)	Unlikely (1-2% AP) (2)	Possible (2-10% AP) (3)	Likely (10-50% AP) (4)
LIKELIHOOD						

REQUESTS



Feedback?



Open house

*April 13th 6pm at
Heritage Inn*